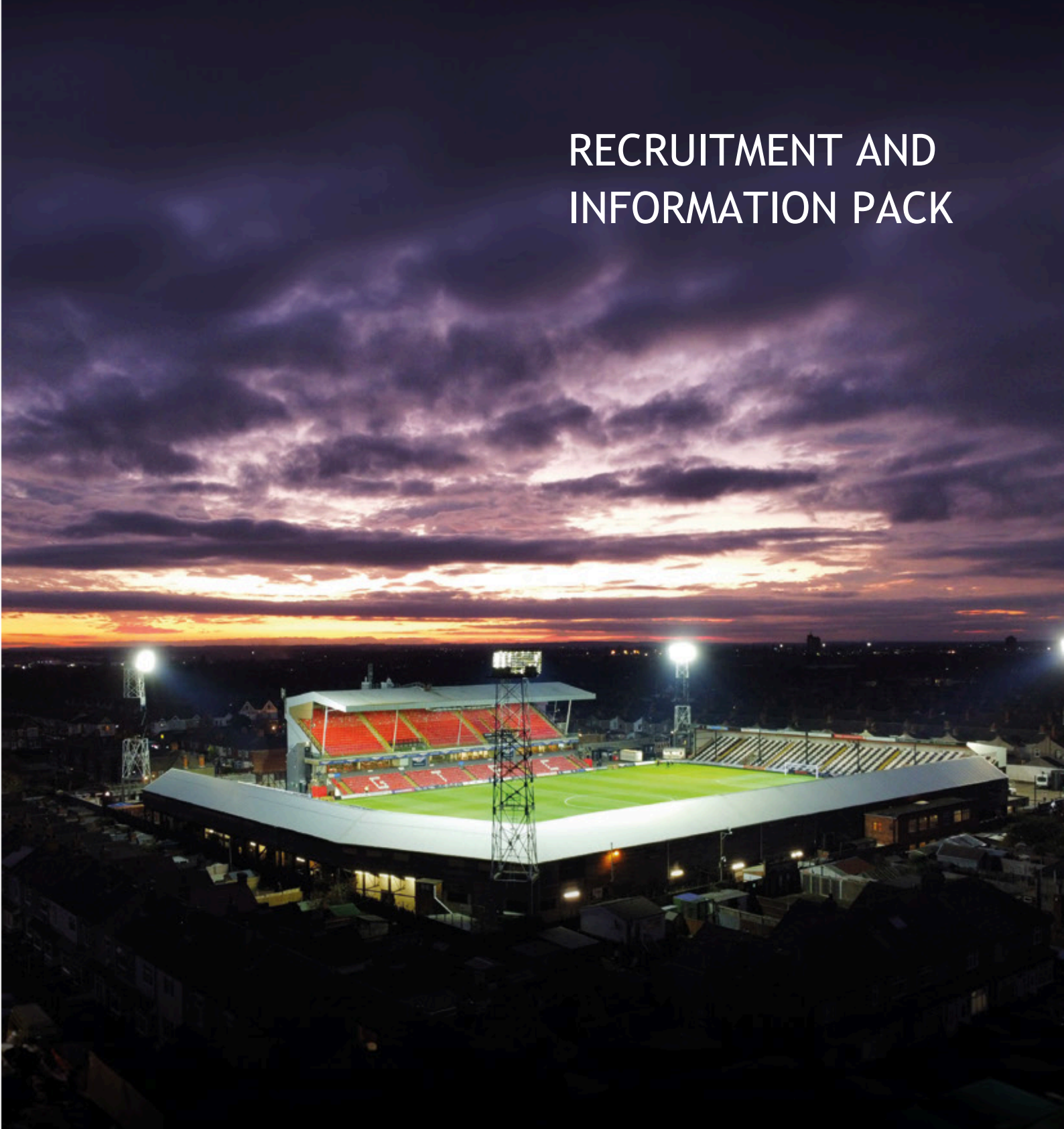


RECRUITMENT AND INFORMATION PACK



**Senior Physiotherapist
- Men's First Team
Job Advert**



ABOUT US

Grimsby Town Football Club is an English football club based in the seaside town of Cleethorpes, North East Lincolnshire.

Founded in 1878 as Grimsby Pelham, the Club was renamed Grimsby Town a year later and went on to become Lincolnshire's leading football club, spending many years in the top two divisions and twice reaching the semi-final of the FA Cup.

The Club is owned by 1878 Partners Ltd, and since their takeover in 2021, they have made it their mission for there to be a real tangible connection between fans and the Club.

Along with a long-established Men's First Team who play in the EFL Sky Bet League Two, the Club also has an academy known for developing talent, a Women's First Team who compete in Division One North and the Grimsby Town Foundation, which last year delivered a charitable spend of over £4m.

The next chapter of Grimsby Town Football Club is in our hands. Together, we can achieve greater things. And to achieve greater things we need a great team.



WHO WE ARE

We don't just work for Grimsby Town Football Club – we are Grimsby Town Football Club. It's a remarkable story that began in 1878 and has continued uninterrupted ever since.

There is nothing bigger and nothing more powerful in uniting so many people – through purpose, passion and pride – than a football club. It's people's identity. It's their family; their heritage. It's where they belong. This is something that cannot be undone. The bond, ties and loyalty are forever. And by being here, we are part of the story.

This is no ordinary job. This is an extraordinary opportunity. We are more than staff, players, managers, coaches, analysts, physios, stewards, and volunteers. We are friends, supporters, promoters, entertainers, role models and, in some cases, idols and legends. But we cannot be any of these things without each other.

None of us is bigger than all of us. Every day, we strive for better. We are a football club, but we're at the heart of something much bigger. A club formed from its community now has the power to define its community. We are today's authors of this black and white story.

This moment has been 146 years in the making. And the next chapter is in our hands. Together, we can achieve greater things. And to achieve greater things we need a great team, and this is where you come in.



JOB PURPOSE

To be responsible for day-to-day assessment, treatment, management and rehabilitation of all Men's First Team injuries as well as first aid cover of all first team and reserve matches.

Start date for the role is 1st May 2025.

MAIN ROLES & RESPONSIBILITIES

- Act as lead physiotherapist for all Men's First Team training and games, ensuring adequate emergency first aid provision for training, home and away fixtures
- To provide evidence-based assessment, treatment and rehabilitation programmes for all first team players
- Play an active role in developing and enhancing the treatment and management of injuries programme with current research developments and guidelines
- Maintain detailed, accurate records for all activities in the department in accordance with relevant legislation, policies and procedures, complying with the core standards of Chartered Society of Physiotherapy (CSP/HCPC)
- Implement and monitor a treatment of injuries strategy for Grimsby Town FC, working directly with the first team Head Coach, Head of Performance and Lead Physical Performance Coach
- Work with Lead Physical Performance Coach as part of an interdisciplinary team to oversee player programmes and input any changes
- Liaise with all technical coaching staff keeping them fully informed of diagnosis, treatment, rehabilitation progress and general player wellbeing and fitness status
- Analyse and review the treatment and management of injuries programme on a regular basis to adapt the programme to meet specific player and squad needs
- Implement injury prevention and reduction strategies with Performance staff
- Actively seek relevant CDP opportunities which will assist in developing yourself and the department
- Maintain medical confidentiality at all times where appropriate, in accordance to relevant legislation
- Maintain qualifications to the minimum standard as required by the rules: FA Advanced Trauma Medical Management in Football (ATMMiF); FA Safeguarding Children Certificate; FA DBS check & all CPD as indicated by Chartered Society of Physiotherapists Guidelines

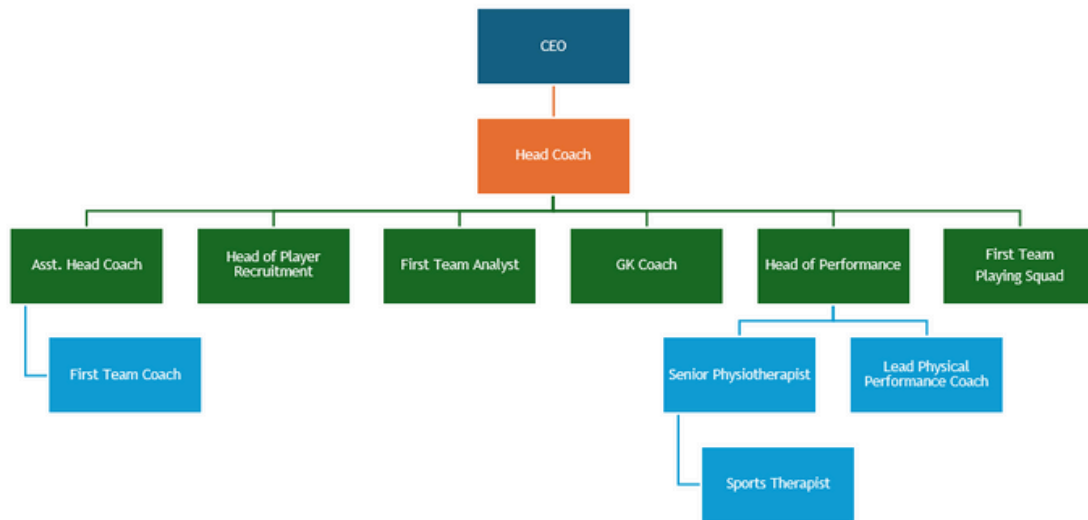


MAIN ROLES & RESPONSIBILITIES

Line management

- As shown in the structure chart below this role will report into the Head of Performance
- It has line management responsibilities of the Sports Therapist

Men's First Team



This job description is not exclusive or exhaustive. It is intended as an outline indication of the areas of activity and will be amended in consultation in the light of the changing business needs.





KNOWLEDGE & EXPERIENCE

To be considered for this role, the following qualifications, skills and experiences are required:

Essential:

- BSc in Physiotherapy
- Chartered Physiotherapist (CSP Registered)
- Health and Care Professions Council (HCPC) registered
- Advanced Trauma Medical Management in Football (ATMMiF)
- FA Safeguarding Certification

Desirable:

- Sports Science/S&C background
- Full, clean driving licence
- MSc in related subject

Knowledge, Skills & Experience:

- Strong Leadership and Management Skills
- Excellent Communication Skills
- Experience working with online medical notes
- A working knowledge and understanding of professional football
- Experience in Elite Sport

Start date for the role is 1st May 2025.

CLUB VISIONS & VALUES

All employees are expected to operate within and always demonstrate a commitment to the Club's values:

- Proud to be GTFC: it is a privilege to wear the badge and we do it with pride
- Trust in Town: we rely and depend on each other to do our best
- Stand up for the Mariners: we show courage and positivity in the face of new challenges
- One of Our Own: we treat each other like family
- Always Improving: we raise the standards in everything we do





B CORPORATION

Grimsby Town Football Club is currently working towards B Corp Certification. B Corp Certification is a designation that a business is meeting high standards of verified performance, accountability, and transparency on factors from employee benefits and charitable giving to supply chain practices and input materials. To achieve certification, a company must:

- Demonstrate high social and environmental performance by achieving a B Impact Assessment score of 80
- Make a legal commitment by changing their corporate governance structure to be accountable to all stakeholders, not just shareholders, and achieve benefit corporation status
- Exhibit transparency by allowing information about their performance measured against B Lab's standards to be publicly available on their B Corp profile on B Lab's website

B Corp Certification is holistic, not exclusively focused on a single social or environmental issue. And the process to achieve and maintain certification is rigorous and requires engaging teams and departments across the whole organisation. All employees are expected to commit to the journey of achieving B Corporation Status.

SAFEGUARDING STATEMENT

Grimsby Town Football Club is committed to safeguarding the welfare of children and young people and expects all staff and Volunteers to endorse this commitment.

EQUALITY, DIVERSITY AND INCLUSION

Grimsby Town Football Club's commitment to Equality, Diversity and Inclusion is to confront and eliminate discrimination whether by reason of age, gender, gender reassignment, sexual orientation, marital status or civil partnership, race, nationality, ethnicity (race), religion or belief, ability or disability, pregnancy or maternity and to encourage equal opportunities (Protected Characteristics, Equality Act 2010).

Employees of Grimsby Town Football Club must ensure a positive commitment towards Equality, Diversity and Inclusion by treating others fairly and not committing any form of direct or indirect discrimination, victimisation or harassment of any description and to promote positive working relationships between all internal and external stakeholders.





EMPLOYEE BENEFITS

£35,000 annual salary

28 days annual leave inclusive of bank/ public holidays

Relocation expenses if required

Company pension scheme

Staff social activities

Inclusive and welcoming environment - equality, diversity, and inclusion priorities are embedded throughout the organisation

Support for health and wellbeing, including access to occupational health support and confidential counselling

Discount in the Grimsby Town Football Club shop

Discounted Grimsby Town Football League fixture tickets

Interested? For further information and/or to apply, please visit gtfc.co.uk/category/vacancies

1. The deadline is midnight on Friday 3rd January
2. Initial interviews to be held week commencing 13th January
3. Final interviews to be held week commencing 27th January

Please note we reserve the right to close the vacancy earlier than scheduled if a sufficient number of applications are received.

Grimsby Town is an equal opportunities employer and aims to ensure all applicants are treated fairly and equitably regardless of gender, race, colour, ethnicity, age, disability, social economic background, religious or political beliefs, marital status, maternity or paternity or sexual orientation.



North East Lincolnshire is a great place to live and bring up a family. There are a number of beautiful locations in and around the area of Grimsby and Cleethorpes which are ideal places to live, and our house prices are among some of the most affordable in the country. We are also on the doorstep of the Lincolnshire Wolds - an area of outstanding natural beauty.

Grimsby is at the centre of one of the biggest renewable energy booms in the whole of Europe, resulting in a growth of retail, hospitality and leisure facilities across North East Lincolnshire. Cleethorpes is blessed with one of the longest and naturally beautiful beaches and the town has great events that attract visitors from all over the country, including carnivals, air displays, street markets and other cultural events.

The location also has great transport links with two train stations, an international airport less than 20 miles away, and being less than an hour away from Hull, Lincoln and Doncaster.

North East Lincolnshire is a truly wonderful place to live and work.



Blundell Park
Cleethorpes
DN35 7PY
Email: recruitment@gtfc.co.uk